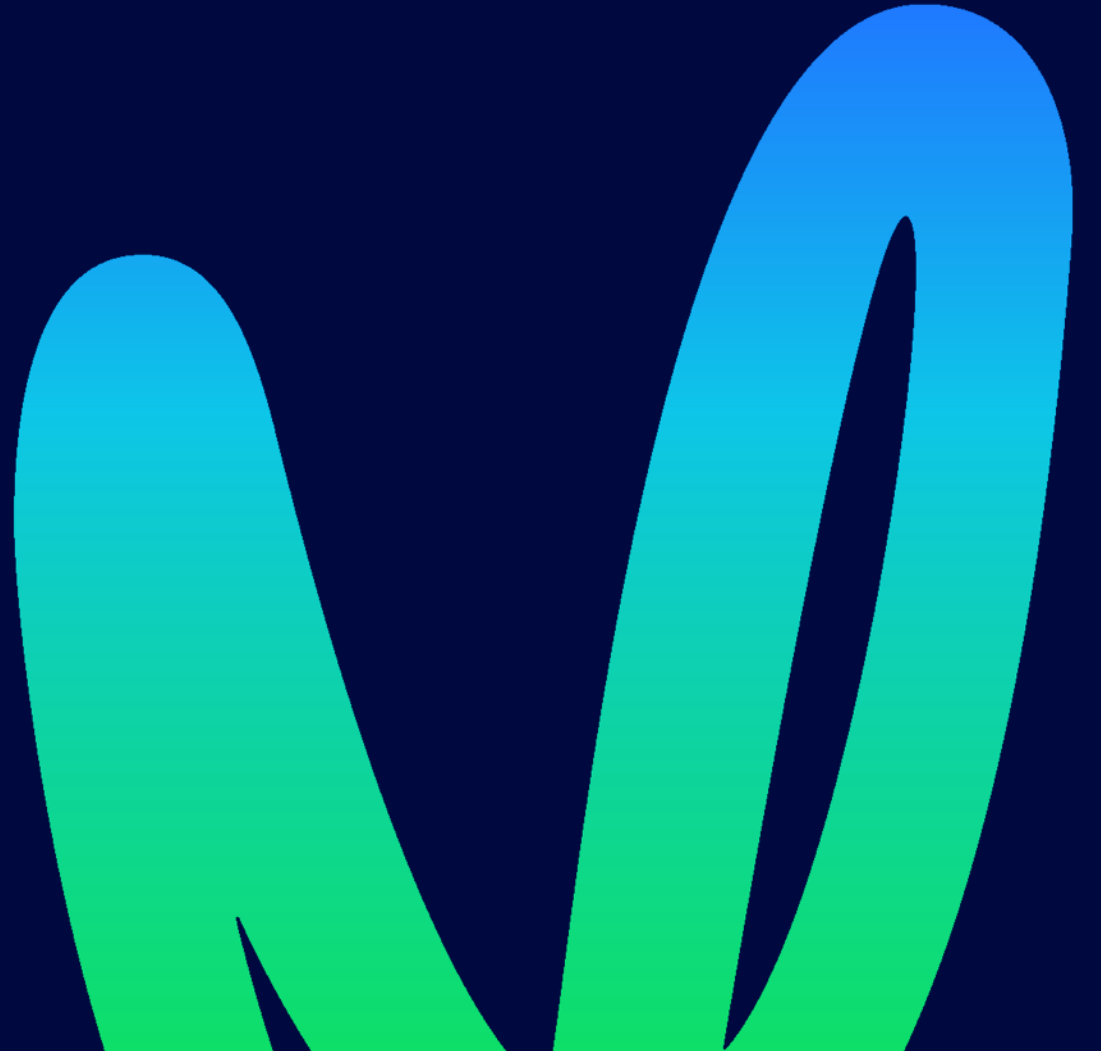


Tree selection and planting guide

For planting within 8m of power lines



Choose trees carefully

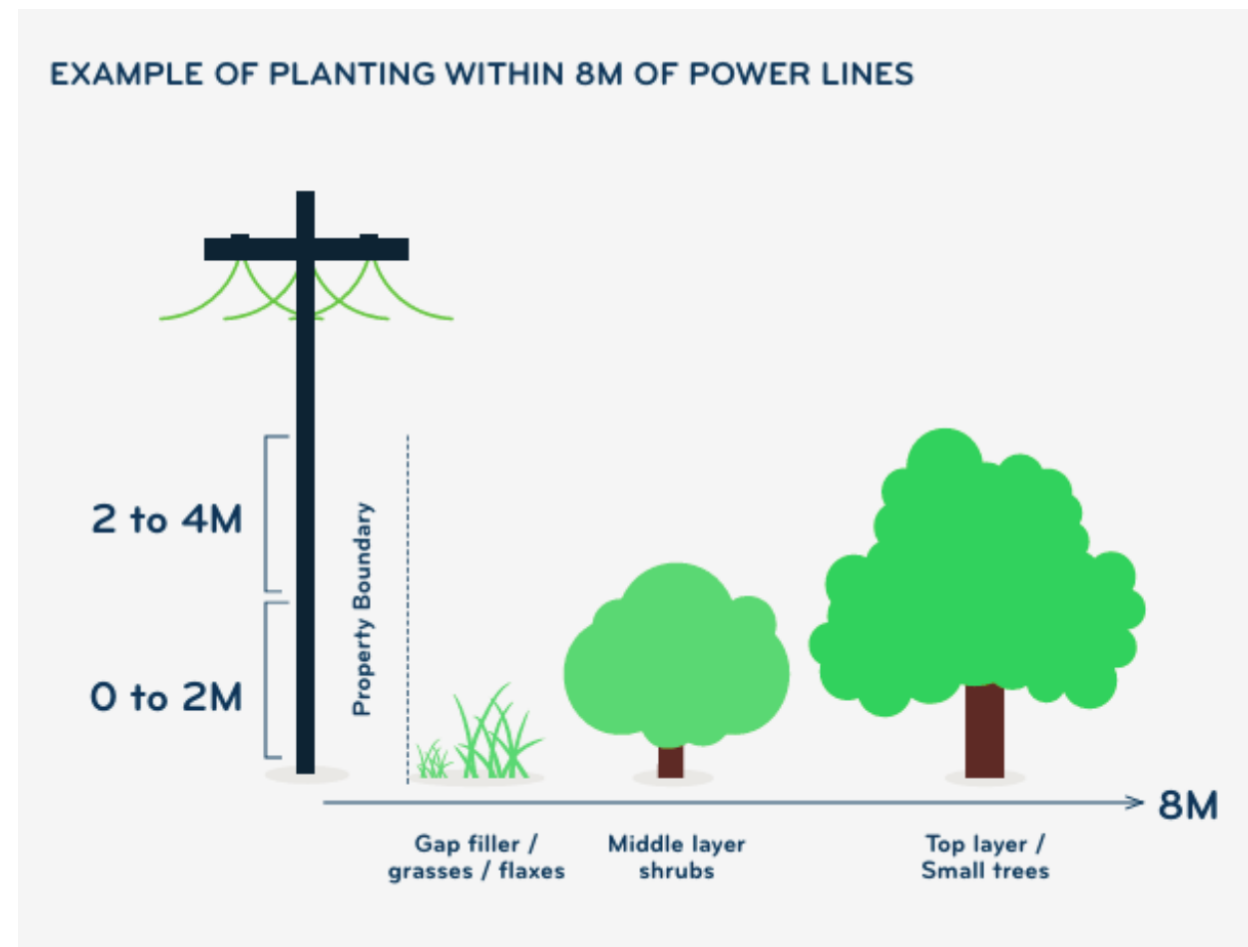
Power lines and trees can get along – if you choose the right species and plant them the right distance from the lines.

By planting the right sorts of trees and shrubs near network power lines (typically within 8m), you can help avoid the risk of power outages to your neighbourhood.

Trees and branches falling onto lines are a major cause of power outages in Auckland.

Trees must be kept clear of network power lines, as required by the Electricity (Hazards from Trees) Regulations 2003. Under these regulations, tree owners are responsible for the costs of keeping trees trimmed and outside the growth limit zones around network power lines.

Tree owners may face penalties for failing to keep trees clear of lines and may be responsible for the costs of damage a tree causes to power lines or equipment. For more information about the regulations and your responsibilities as a tree owner, please visit: www.vector.co.nz/our-services/electricity/trees-lines



There are some simple rules to follow whether you're planting a shelterbelt, a hedge for privacy or security, or simply want to enhance the edge of your property near network power lines.

- Use the height rules to determine which types of plants are best for your situation
- Native species are often the best to plant because they are used to our local conditions
- Exotic species (non-native) especially trees are faster growing and need more care. If not maintained they will become hazardous.
- A mix of height and types work best – with flaxes and grasses planted near network lines, followed by shrubs and trees further away.
- Mixing species fills gaps, reduces maintenance (especially weeds) and provides wildlife habitat
- Slower growing species are best – you can buy larger grades to get a hedge effect quicker
- Fast growing species such as Eucalyptus, Pines and Poplars are unsuitable as they grow rapidly and can require two cuts per year .
- Fast growing species may also need to be removed and can become hazards by shedding limbs and bark



Plant smart around power lines:

- **Buy smart** – use our table of species or buy plants with similar growth habits
- If in doubt ask your local nursery for help – let them know where you live to help with suitable species selection
- Our species list is a guide only. It is made up of hardy, adaptable, easy to grow and buy species that are also good for wildlife from bees to birds.
- **And remember, before planting a tree, look up and look out for power lines.**



Suitable trees and other vegetation for planting under or near power lines (within 8M)

Botanical name	Common name	Height x Width	Native	Exotic
Gap fillers		Grasses/flaxes/smaller plants		
Apodasmia similis	Oioi, jointed rush	1.5m x 1m	x	
Astelia trinervia	Kauri grass	2m x 2m	x	
Cortaderia splendens	Coastal toetoe	2.5m x 2.5m	x	
Machaerina sinclairii	Tuhara	1m x 1.5m	x	
Phormium cookianum	Coastal flax (Wharariki)	1.5m x 2m	x	
Phormium tenax	Harakeke	3m x 3m	x	
Azalea	Most varieties	1.5m x 1m		
Hemerocallis	Day lilies (most cultivars except H. fulva)	1m x 1.5m		x
Hydrangea	Most varieties	1.5m x 1.5m		x
Leucospermum	Most varieties	1.5m x 1.5m		x
Pieris	Lily of the valley shrub	1.5m x 1m		x
The Middle Layer		Shrubs		
Coprosma lucida	Shining karamu	3m x 2m	x	
Corokia cotoneaster	Kumerahou	2m x 1.5m	x	
Leucopogon fasciculatus	Mingimingi	2m x 1.5m	x	
Pomaderris kumeraho	Kumerahou	2mx1.5m	x	
Macropiper excelsum	Kawakawa	2m x 1.5m	x	
Solanum laciniatum	Poroporo	3m x 4m	x	
Camellia	Most varieties	3m x 1.5m		x
Feijoa	Most varieties	3m x 2m		x
Hibiscus	Most varieties	2.5m x 1.5m		x
Michelia figo	Port wine magnolia	3m x 2.5m		x
Malus floribunda	Crabapple	3m x 2.5m		x
Choisa ternata	Mexican orange blossom	2m x 1.5m		x
The Top layer		Small Trees		
Coprosma repens	Mirror plant, taupata	4m x 2m	x	
Hebe stricta	Koromiko	4m x 2.5m	x	
Olearia furfuracea	Akepiro	4m x 2m	x	
Pseudopanax lessonii	Coastal five finger, houpara	4m x 2m	x	
Pittosporum tenuifolium	Pittosporum mountain green	4m x 2m	x	
Callistemon	Bottlebrush (most cultivars)	4.5m x 1.5m		x
Grevillea	Various cultivars small tree and shrub size	To 4m x 2.5m		x
Protea	Most varieties	3m x 1.5m		x
Telopea	Waratahs - Most varieties	3m x 2m		x
Viburnum tinus lucidum	Laurustinus	4m x 1.5m		x